



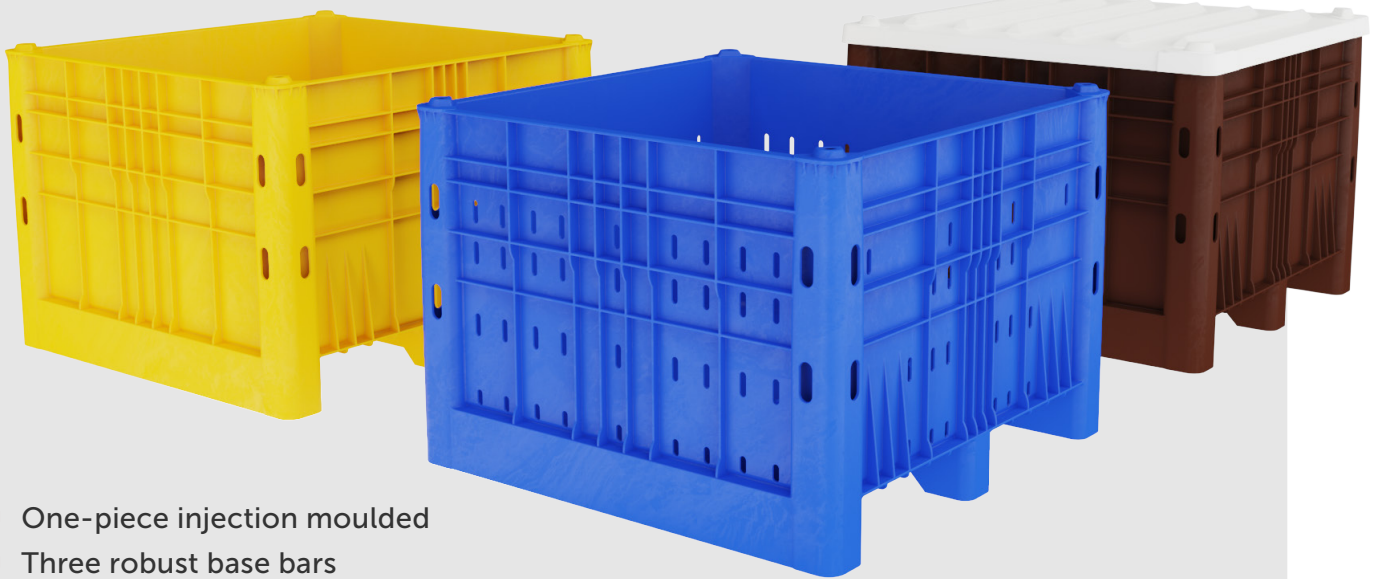
DOLAV[®]

Superior handling &
storage solutions

DOLAV TYPE 1120

General Purpose Box Pallets

Available in different sizes to meet your needs

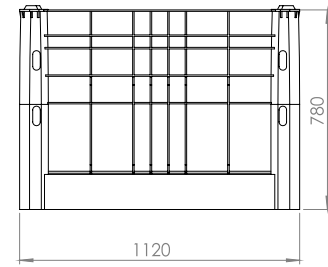
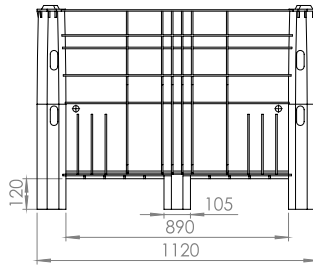
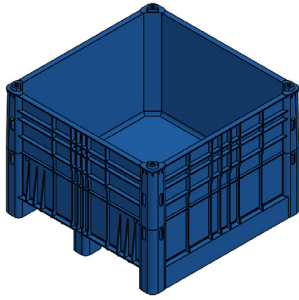


- One-piece injection moulded
- Three robust base bars
- High impact resistance
- HDPE structural foam
- Available in solid and perforated version
- Safe stacking up to 4000Kg
- Fully recyclable
- Easily customised (L/W/H)
- Excellent performance at -40°C up to +60°C
- UV Stability
- Food contact approval
- Excellent racking performance

Different versions and customization options available



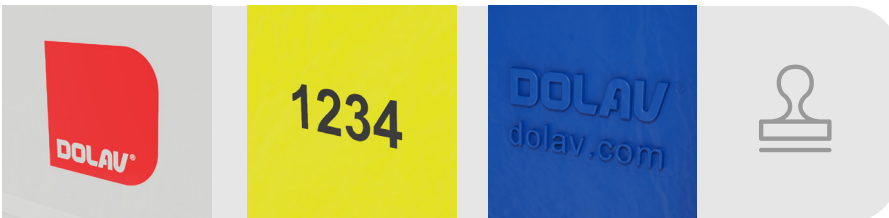
Technical Data



| Product Description | Cat. No. | External Dim. LxWxH (mm) | Internal Dim. LxWxH (mm) | Vol. (Liter) | Tare Weight (Kg.) | Max Load (Kg)* | Stack Load (Kg) | Units per container 40hc |
|------------------------------------|------------|--------------------------|--------------------------|--------------|-------------------|----------------|-----------------|--------------------------|
| Type 1120 Solid | 1200000000 | 1120x1120x800 | 1035x1035x650 | 700 | 40.5 | 700 | 4000 | 64 |
| Type 1120 Perforated | 1210000000 | 1120x1120x800 | 1035x1035x650 | 700 | 39.5 | 700 | 4000 | 64 |
| Type 1120 Solid SH-540 | 1201400000 | 1120x1120x540 | 1035x1035x400 | 425 | 30.8 | 700 | 4000 | 84 |
| Type 1120 Solid Reinforced SH-1140 | 1201800030 | 1120x1120x1140 | 1035x1035x1000 | 1080 | 62.8 | 700 | 4000 | 40 |
| Type 1120 Solid SL-2100 | 1204700000 | 2100x1120x800 | 2025x1035x650 | 1350 | 64.1 | 1350 | 4000 | 30 |

- Due to deviations in the manufacturing process, tare weight may vary by $\pm 1.5\%$
- Maximum stacking load refers to vertical loading when the 4000kg load per single box pallet does not exceed 600kg.
- Dimensions may vary by $\pm 1\%$.
- Data refers to temperature of 23°C.
- Also available with combination: solid walls and perforated base or perforated walls and solid base - minimum order quantity applies.

Logo Options



Hot stamped logo

Sequential numbering

Embossed logo

Your company name, logo and sequential numbers can be hot stamped onto the Dolav for easy identification.

DOLAV®

Tried. Trusted. Best.



Dolav Plastic Products, Kibbutz Dvir M.P. HaNegev 8533000

☎ 972-72-2450700 📠 972-8-9918710 ✉ dolav@dolav.com 🌐 www.dolav.com

Worldwide offices: Benelux, China, France, Germany, Hong Kong, Ireland, Israel, Italy, Russia, Spain, UK, USA

